

# 스마트 솔루션과 스마트 플랫폼을 위한 고성능 스마트 비전 카메라

LaonPeople Inc.  
김헌중

# CONTENTS

LAON PEOPLE



- 1. Machine Vision & Technology Trend**
- 2. Smart Factory Overview**
- 3. Machine Vision Keyword for Smart Factory**
- 4. Smart Vision Camera Solution for Smart Factory**



# 1-1. Machine Vision

## Machine Vision

**Machine vision (MV)** is the technology and methods used to provide **imaging-based automatic inspection and analysis** for such applications as **automatic inspection, process control, and robot guidance** in industry.



Machin Vision	Vision System	<ul style="list-style-type: none"> <li>√ Smart Camera</li> <li>√ Machine Vision Camera and PC (Option : Grabber)</li> <li>√ Machine Vision S/W</li> </ul>
	Vision Camera	√ Vision Processor + Vision Sensor + Lens
	Optics and illumination	√ Focusing the image of the object while lighting system illuminates
	Frame Grabber	√ Capturing the camera's output to transfer data to the PC
	Vision S/W	√ Analyzing and manipulate the image and extract information

### Application

검사

측정

불량  
검출

위치  
확인

로봇  
가이드

색상  
판별

바코드  
판독

문자  
판독

# 1-2. Machine Vision Core-Tech. Trend Cont.

## Core Technology Trend

### High Resolution

WQVGA ~ 25M(5120x5120)

### High Frame Rate

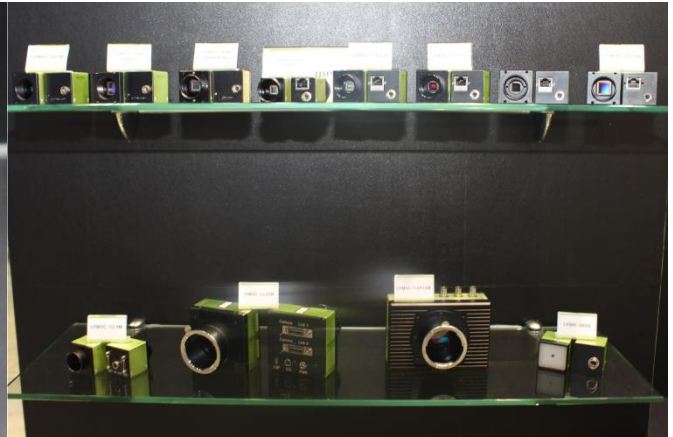
12M@190fps  
 400x288(WQVGA)@2000fps

### Recent Interface

- . CoaXPress, Camera Link
- . GigE, USB3.0, HDMI..

### Enhance Image Processing

- . AWB, PRNU, Defect Correction
- . Noise Reduction, Color Correction, Morphology..



# 1-3. Machine Vision Core-Tech. Summary

## Core Technology Trend

### Mixed Detection/Inspection

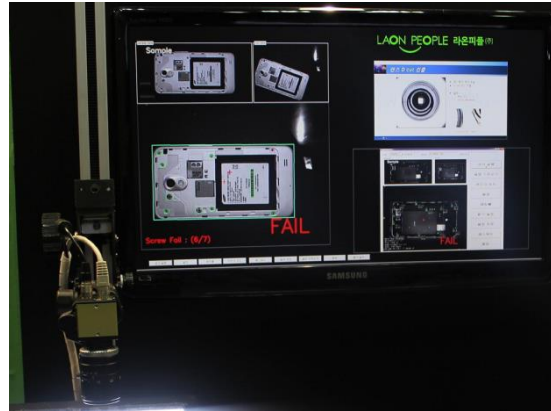
- . Inspection+ OCR+ Barcode
- . Shape+ Pattern+ Gaging
- . 1D/2D Barcode(w/ DPM) + OCR

### SW Configuration

- . User Friendly (More Simple)
- . Auto Simulation
- . Easy Configuration

### Stand Alone System

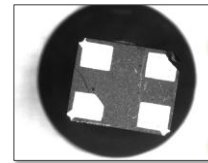
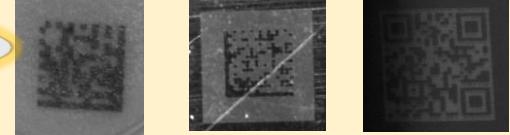
- Smart Camera
- . External Device Integration
- . High Performance
- . Mobile Connectivity



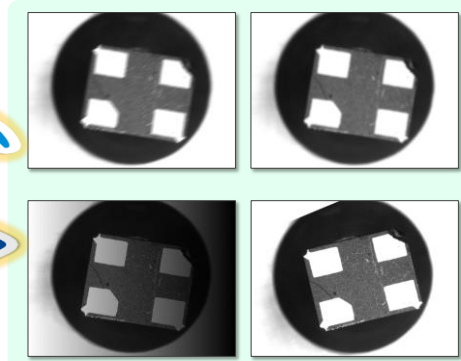
But, Real World, Tough !



Test Sample OK !

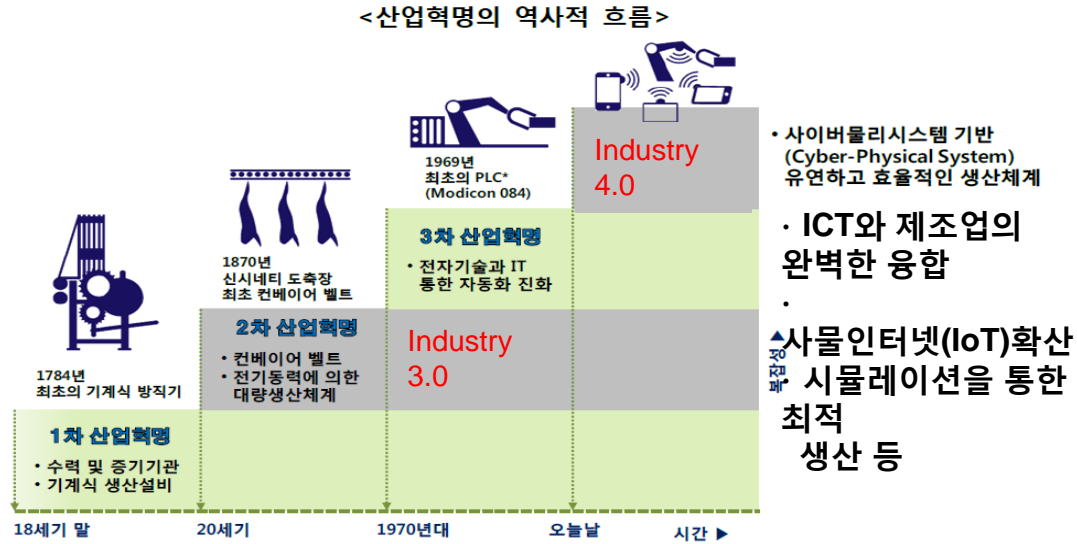


Best Inspection !



LaonPeople MTiG™ & Analyzer

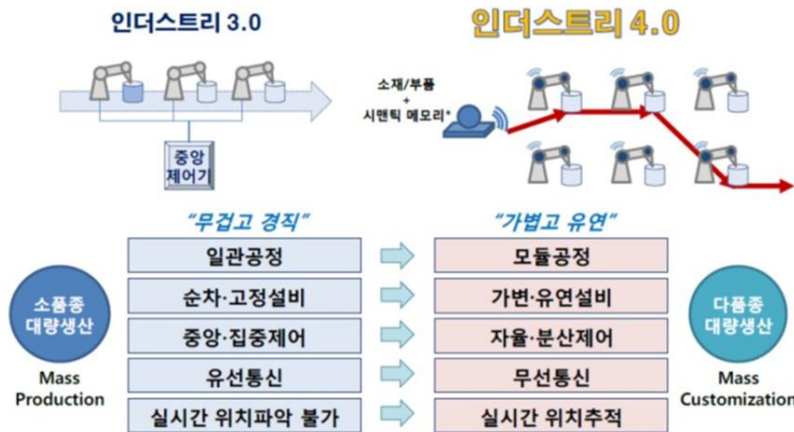
# 2-1. Smart Factory & Industry 4.0 Overview



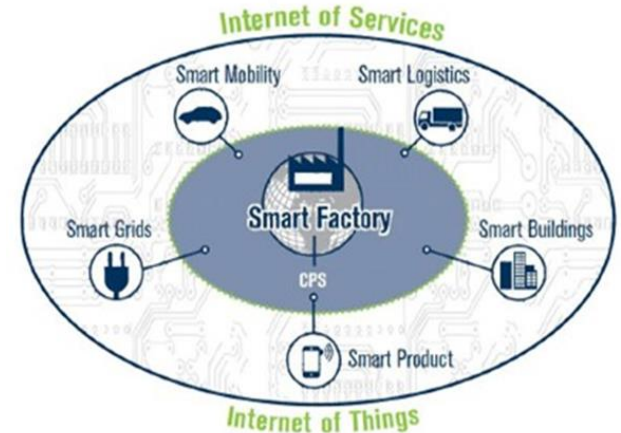
\* PLC Programmable Logic Controller

자료: DFKI (독일인공지능연구소), 2011

## < IoT·IoS와 스마트 팩토리 >



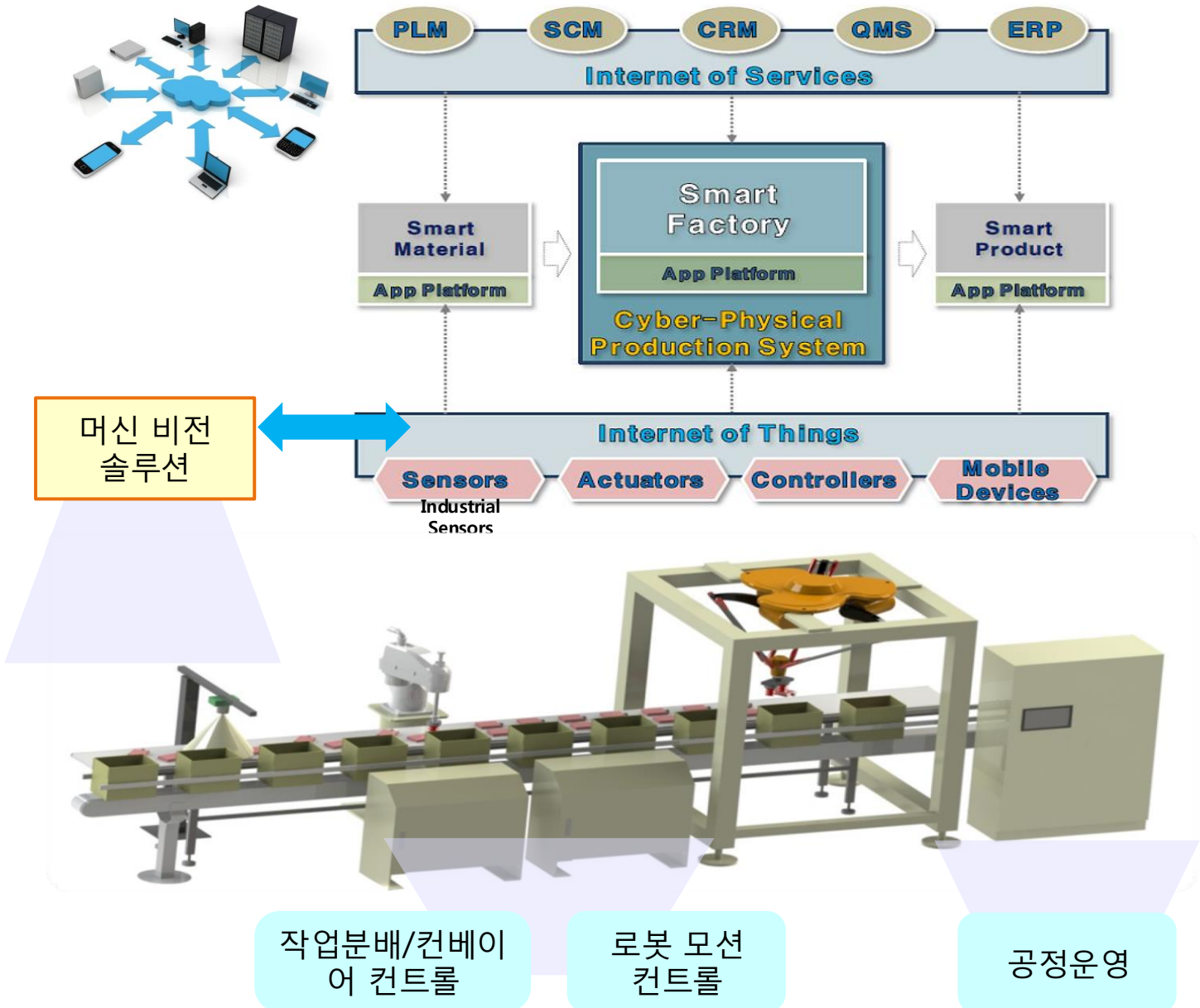
\*시멘틱 메모리: RFID 등 제품의 이동경로 등 이벤트를 기록해 저장할 수 있는 메모리 분류



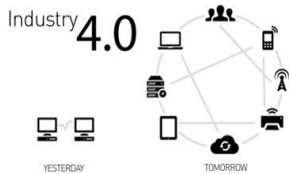
\* IoT, IoS 구성 요소로서 스마트 팩토리 위치 부여  
자료 : DFKI, 2011.



## 2-2. Machine Vision Solution with Smart factory Platform



# 3-1. Machine Vision Keyword for Smart Factory



## <Industry 4.0 Keyword>

- 모듈공정
- 가변.유연설비
- 자율.분산제어
- 무선통신
- 실시간 위치추적

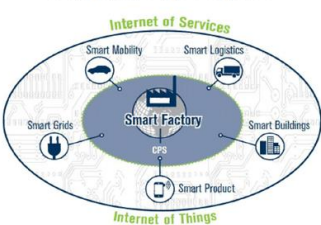
## <Smart Factory 8대 기반 기술>

- 3D Printing
- 홀로그램/증강현실
- 클라우드
- 사물인터넷
- 스마트 센서(센싱)
- 사이버물리시스템
- 빅데이터
- 에너지절감

## Machine Vision Keyword for Smart Factory

- ▶ Stand Alone System
- ▶ 여러 모듈과 동시 접속  
→ Server Platform
- ▶ Solution Scalability
- ▶ Mobile Device와의 Connectivity (Smart Phone, Table)
- ▶ Network Connectivity (Intra to Web)
- ▶ 이종 Platform과 유연한 Open Platform 기반의 HLOS (High Level Operating System)
- ▶ Computing Power (Vision Inspection + Connectivity Solution)

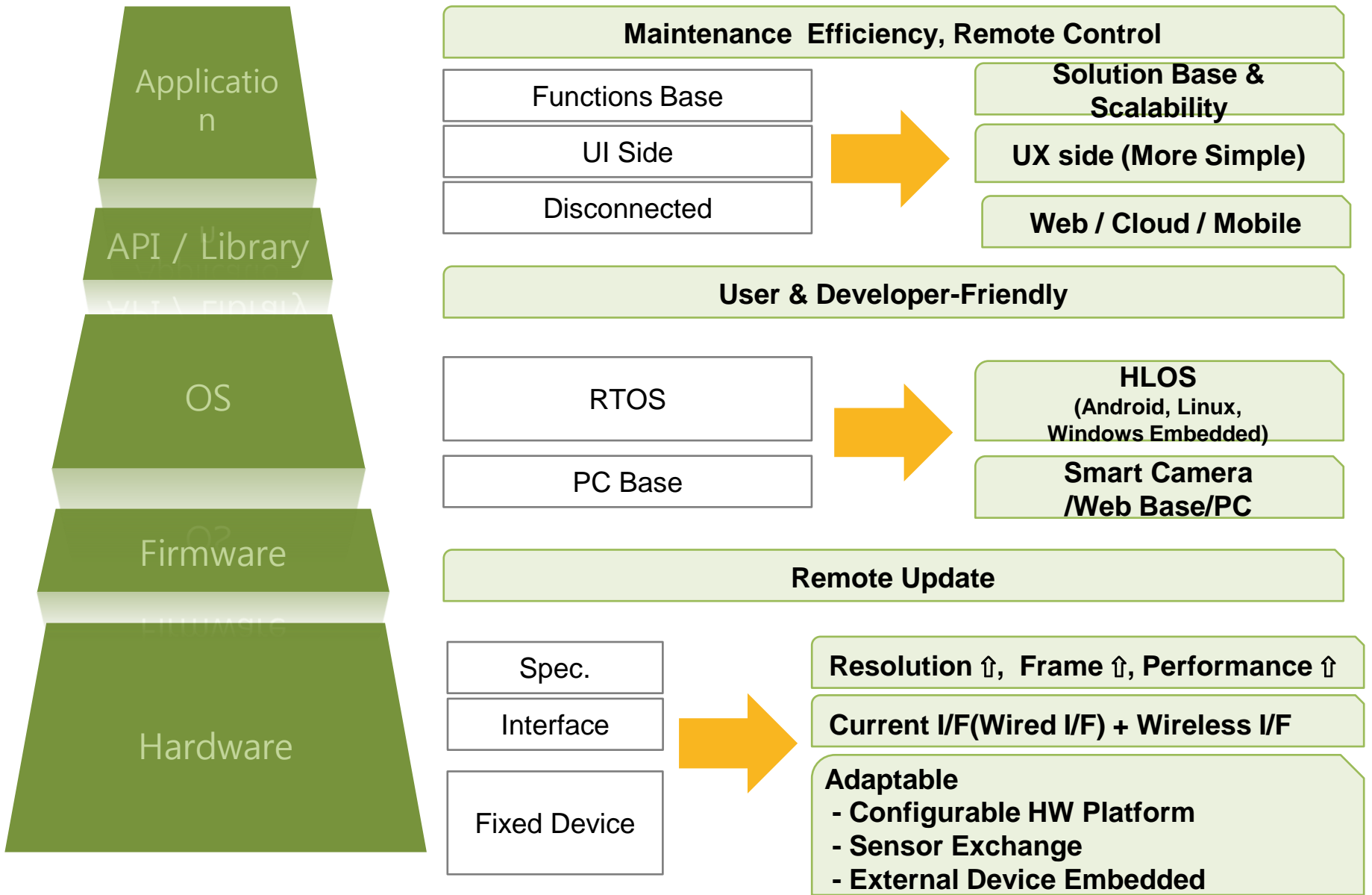
< IoT, IoS와 스마트 팩토리 >



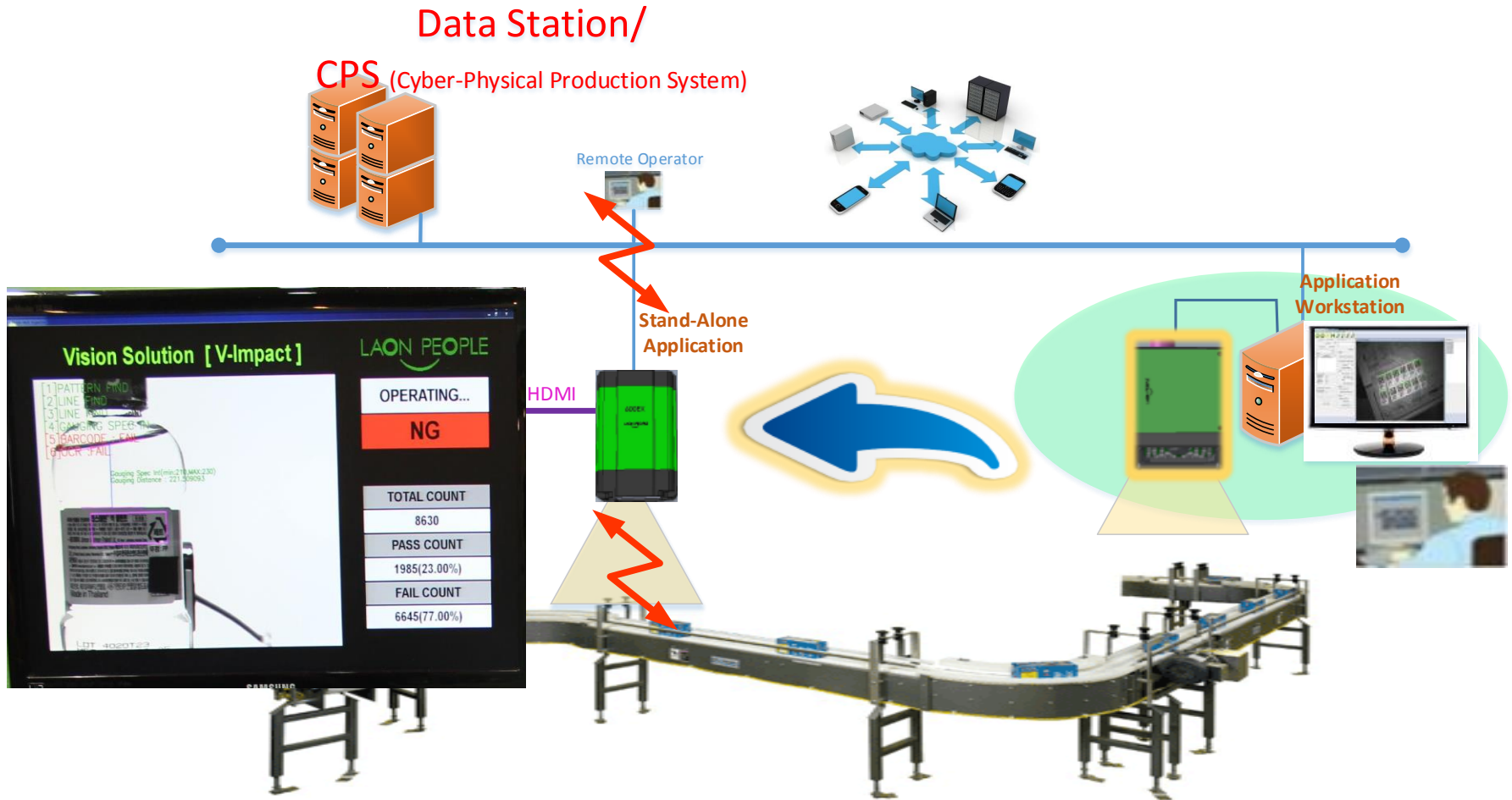
\* IoT, IoS 구성 요소로서 스마트 팩토리 위치 부여  
자료 : DFKI, 2011.



# 3-2. Machine Vision Platform Movement ( To Smart Factory )

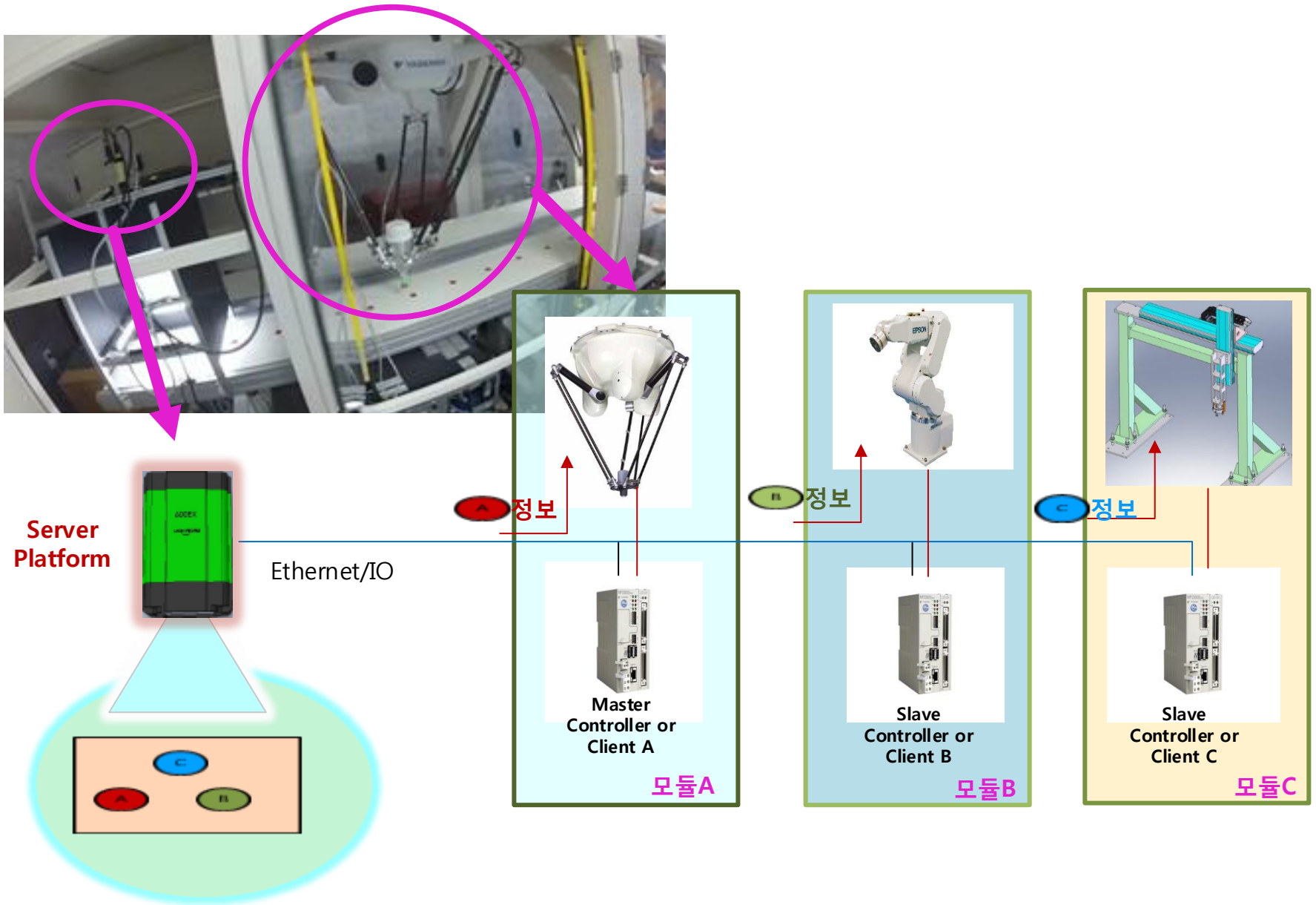


# 4-1. Stand Alone Type Smart Camera

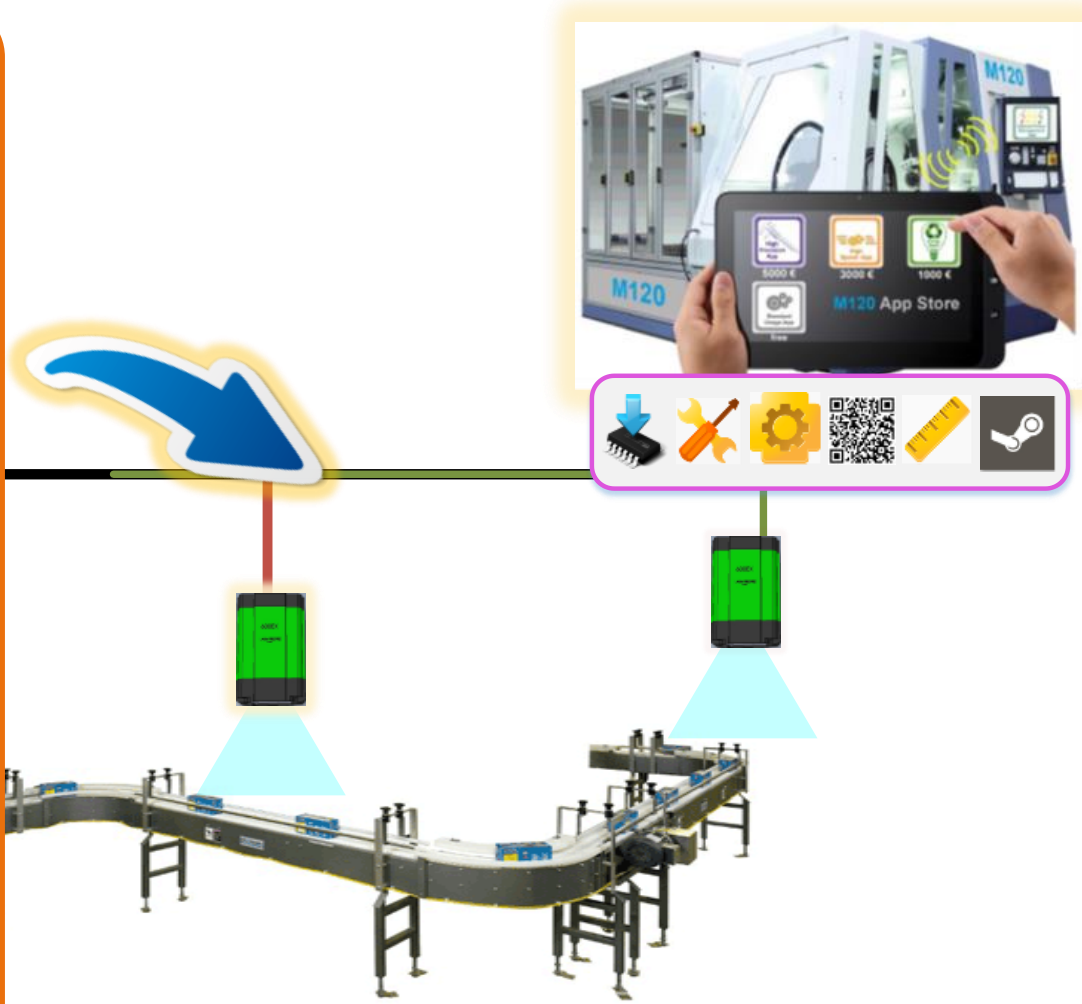


**Single Device Solution Vs. Multi Device Solution**  
**Direct Solution Vs. Indirect Solution**  
**Single Platform Vs. Multi Platform**

## 4-2. Server Platform for module base process

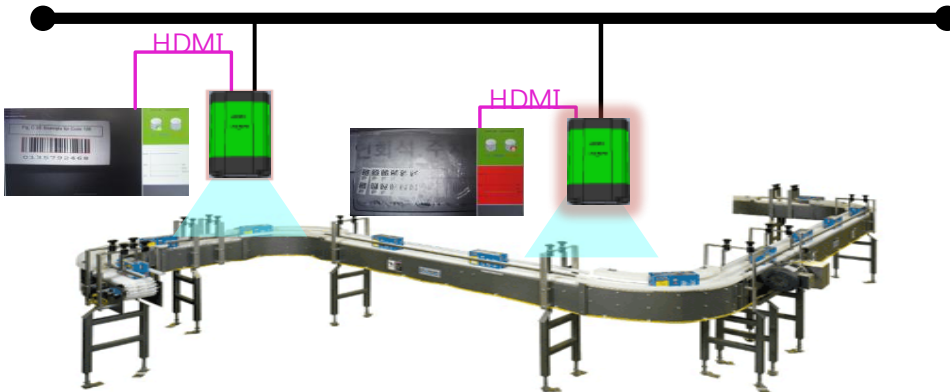
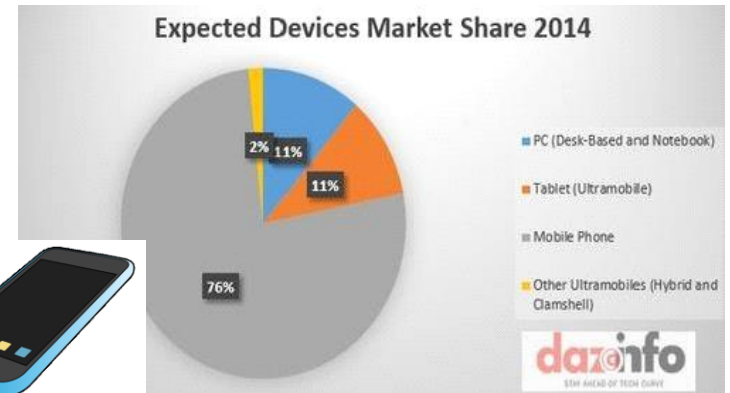


# 4-3. Solution Scalability



Remote Control/Update/Upgrade

# 4-4. Mobility & Maintenance Efficiency





# 4-5. High Level “OS & SW Platform”

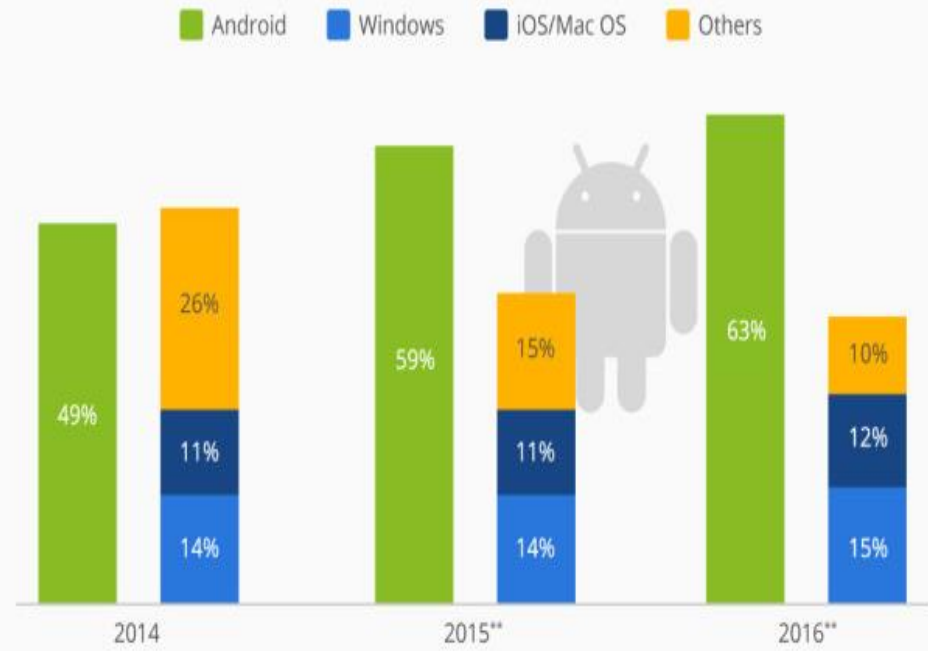


DshowFilter



## Is Android Becoming the New Windows?

Breakdown of global connected device shipments by operating system\*

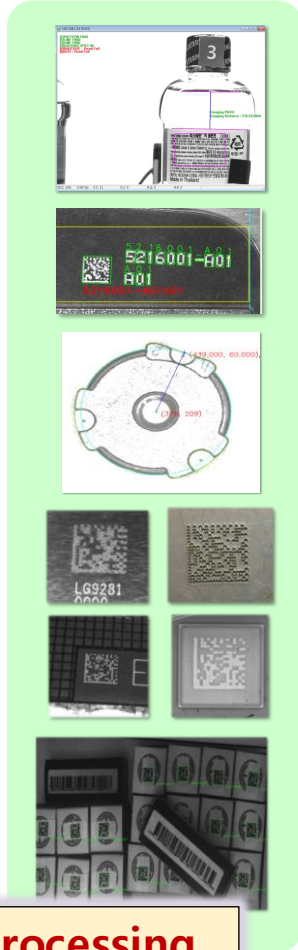
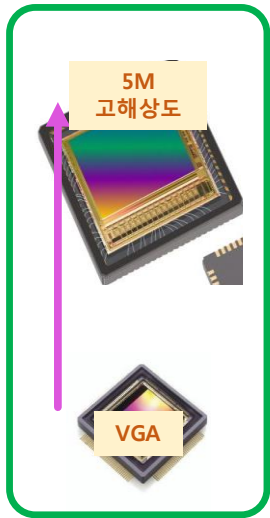


\* Includes mobile phones, PCs, tablets and ultramobiles \*\* Forecast

@StatistaCharts Source: Gartner



# 4-6. High Performance Vision Camera and....Media, Web, Message Solution



**Vision Processing**



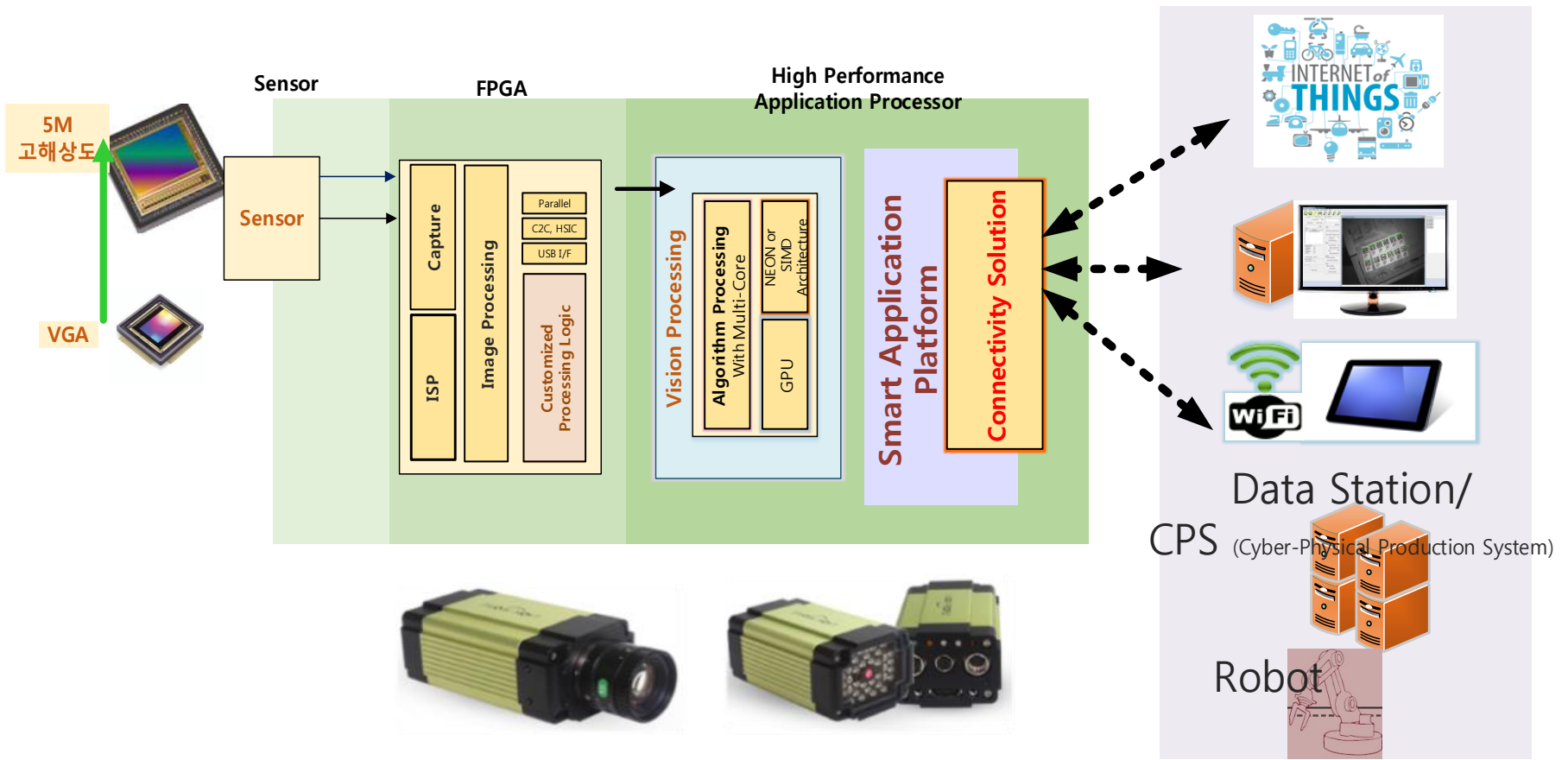
**Media, Web, Communication**

# 4-7. Smart Vision Camera Structure

## High Performance Vision Processing

- Sensor replaceable (...vga..1.2M,..5M)
- Performance Scalable (w/ FPAG+Multi-Core) -
- Application Extendable

## Connectivity /Communication



# Q & A

감사합니다

